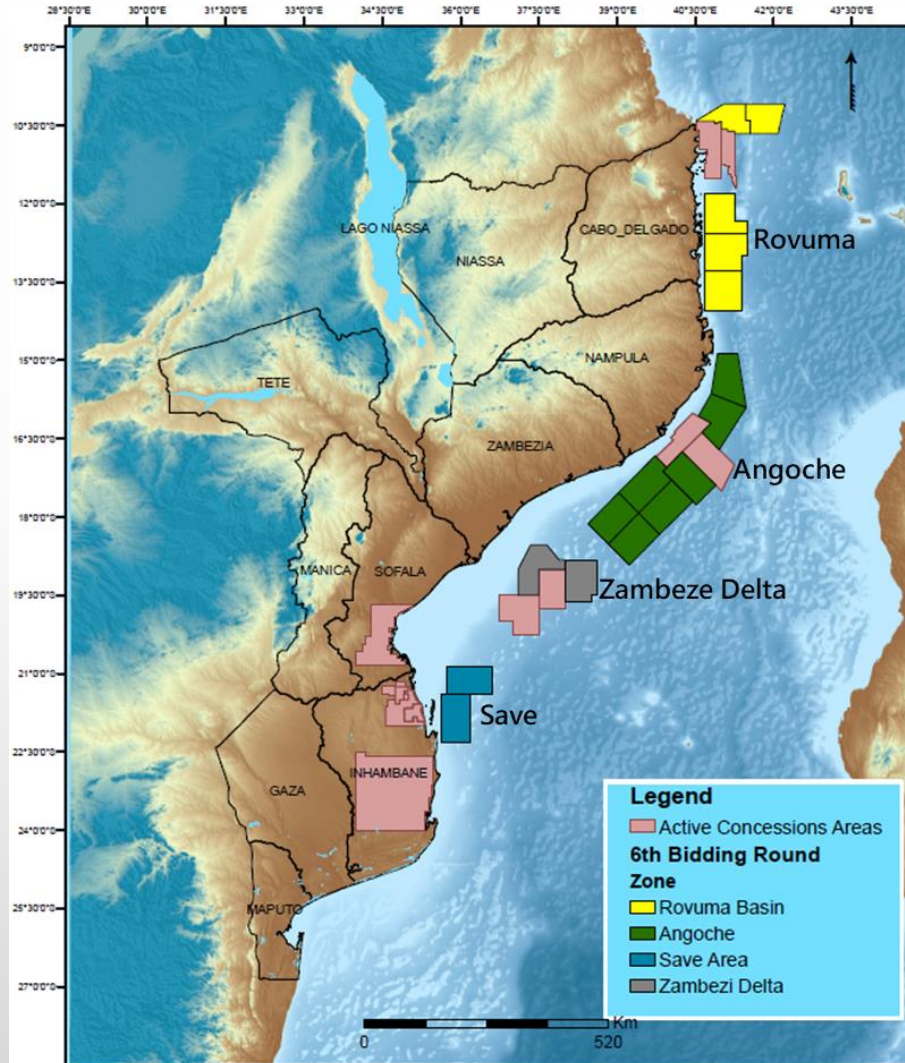


MOZAMBIQUE SIXTH LICENSING ROUND

MINIMUM DATA PACKAGE

DEFINED AREAS FOR THE SIXTH LICENSING AREAS



Rovuma Areas (R6-) 5 areas	28241.01 Km ²
Angoche Areas (A6-) 7 areas	40420.79 Km ²
Zambeze Delta Areas (ZD6-) 2 areas	11474.6 Km ²
Save Areas (S6-) 2 areas	11479.35 Km ²
Total of 16 Areas	91615.75 Km²

MINIMUM DATA PACKAGE

- The INP prepared data packages and recommends companies interested to participate for the sixth licensing round to licence;
- There are two options of the packages for each region:
 - OPTION 1: Regional package
 - OPTION 2: Package per single Area
- MOZDA and CORELAB reports are included in all data packages;
- The licensing of minimum data package in the area of interest is mandatory, except for the companies that already have the data for that particular area;
- The licensing of the minimum data package will allow companies to evaluate the petroleum potential and prepare their proposals
- The price list for the minimum data package is available at INP on request;
- Note that the Multiclient seismic data only can be licensed through the service companies as described on 6th Lic Rnd Technical Data PT/EN available on www.inp.gov.mz
- Details about seismic data per area and per region can be found on GIS interactive map or on the 6th Lic Rnd Technical Data PT/EN document available on www.inp.gov.mz

DATA PACKAGE FOR ROVUMA

OPTION 1

ÁREAS	Legacy Data (km)	Multicliet Data (km)	Nr. of wells	Regional Reports
R6-A	414	180	1	1 . MOZDA
R6-B	122	418	1	
R6-C	681	31	3	
R6-D	557	256	1	2. CORELAB
R6-E	628	222	1	

OPTION 2

Region	Legacy Data (km)	Multicliet Data (km)	Nr. of wells	Regional Reports
Rovuma	2402	1107	7	1 . MOZDA
				2. CORELAB

DATA PACKAGE FOR ANGOCHE

OPTION 1

ÁREAS	Legacy Data (km)	Multicliet Data (km)	Nr. of wells	Regional Reports
A6-A	191	558	0	1. MOZDA
A6-B	118	688	0	
A6-C	111	639	0	
A6-D	141	704	0	
A6-E	130	593	0	1. MOZDA
A6-F	53	651	0	
A6-G	144	565	0	

OPTION 2

Region	Legacy Data (km)	Multicliet Data (km)	Nr. of wells	Regional Reports
ANGOCHE	888	4398	0	1 . MOZDA
				2. CORELAB

DATA PACKAGE FOR ZAMBEZE

OPTION 1

ÁREAS	Legacy Data (km)	Multicliet Data (km)	Nr. of wells	Regional Reports
Z6-A	384	384	1	1. MOZDA
Z6-B	391	391	1	2. CORELAB

OPTION 2

Region	Legacy Data (km)	Multicliet Data (km)	Nr. of wells	Regional Reports
ZAMBEZE	775	775	2	1 . MOZDA
				2. CORELAB

DATA PACKAGE FOR SAVE

OPTION 1

ÁREAS	Legacy Data (km)	Multicliet Data (km)	Nr. of wells	Regional Reports
S6-A	373	373	1	1. MOZDA
S6-B	392	392	1	2. CORELAB

OPTION 2

Region	Legacy Data (km)	Multicliet Data (km)	Nr. of wells	Regional Reports
SAVE	765	765	2	1 . MOZDA
				2. CORELAB